

MOUNT ISA CORPORATE PLAN 2025 – 2030



mountisa.qld.gov.au



Contents

Our Vision03

Our Values03

Elected Representatives.....04

Mayor’s Message07

Corporate Plan Hierarchy08

Our Themes.....09

Strategies10

Liveability & Wellbeing10

Economic.....11

Infrastructure.....12

Environment13

Our Organisation.....14

Delivering the Corporate Plan15

Council acknowledges the Traditional owners and custodians of Mount Isa and Camooweal on the lands on which we live, work and play. We recognise their continuing connection to the land, water and community, and pay our respects to Elders past, present and emerging.

Our Vision

MOUNT ISA THE CITY OF OPPORTUNITY

Mount Isa City Council is one of the more remote local government areas in Queensland. The region lies in the heart of Queensland’s North West, adjoining the border of the Northern Territory.

Mount Isa is located approximately 1,826 kilometres from Brisbane, the capital of Queensland, and 883 kilometres from the nearest main city and port of Townsville. Covering an area of 43,310 square kilometres (including the township of Camooweal), making Mount Isa one of the largest cities in the world.

Mount Isa has a long standing mining heritage. Mount Isa has abundant critical minerals and rare earth elements which will continue to play a key role in supplying the worlds future needs for technology components.

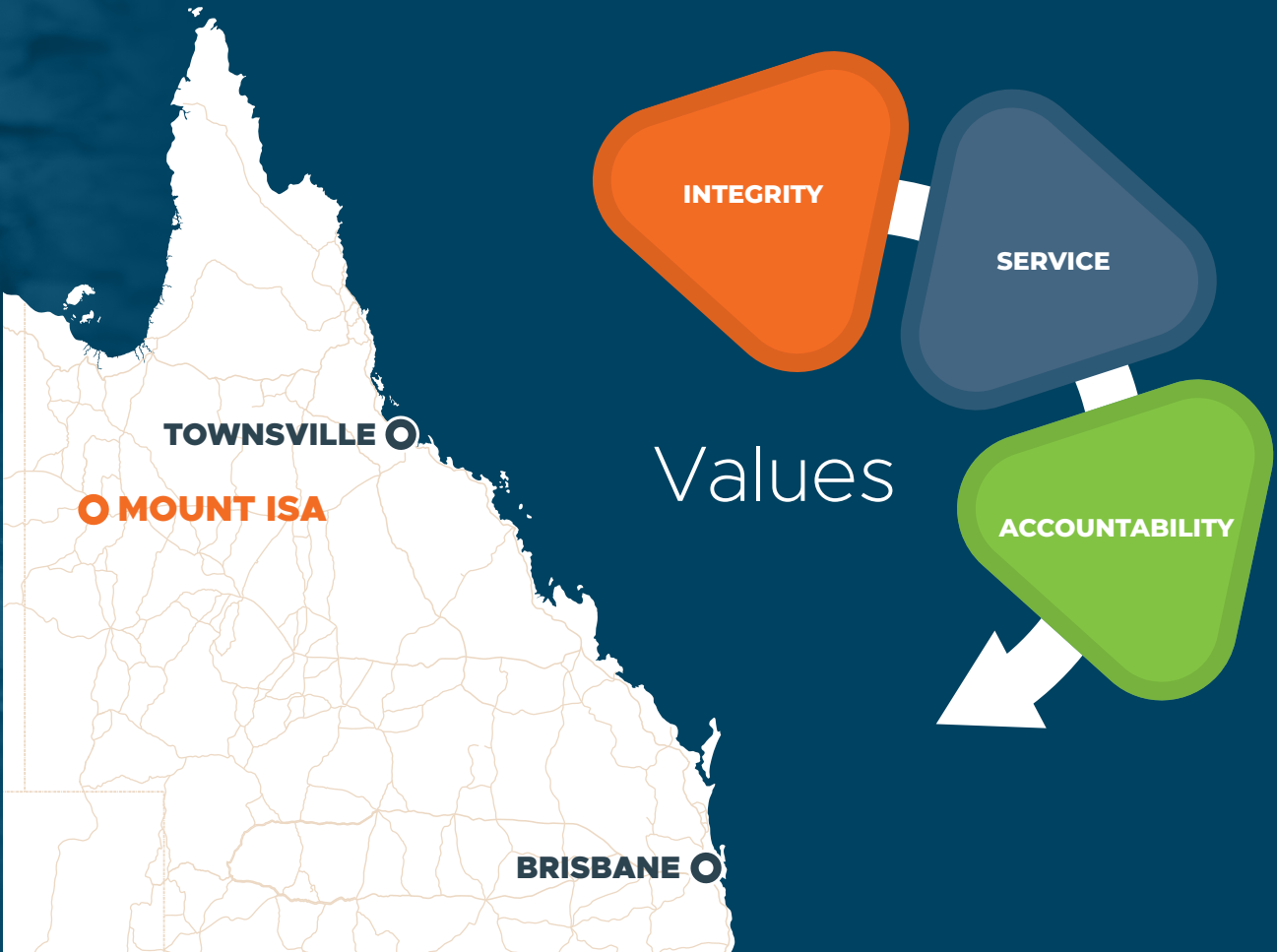
Celebrating its 100th Birthday in 2023, a feat among mining towns nation-wide, Mount Isa has grown from Australia’s first ‘company town’ into one of the largest

and most important industrial powerhouses in the nation.

Demonstrating a strong sense of identity and community, the Mount Isa of today is the administrative, commercial and industrial centre of North West Queensland with gateway access to the North West Minerals Province.

Mount Isa is known for its wide open spaces and its starry skies. Mount Isa produce some of the country’s best beef and is renowned as one of the world’s top 10 producers of copper, lead, silver and zinc.

Mount Isa is home to several unique events including the Mount Isa Mines Rodeo, Lake Moondarra Fishing Classic and the ‘North West MPX’ which attracts visitors from across the globe.





**MAYOR
PETA MACRAE**

ADDITIONAL RESPONSIBILITY

Mayor

PORTFOLIO

Not assigned

**COUNCIL REPRESENTATIVE –
COUNCIL COMMITTEES/BOARDS**

- Local Disaster Management Group (Chair)
- Regional Arts Development Fund Committee

**COUNCIL REPRESENTATIVE –
EXTERNAL ORGANISATIONS**

- MICCOE Board
- North West Queensland Regional Organisation of Councils
- Australian Mining Cities Alliance – AMCA
- Lead Alliance Committee
- Riversleigh World Heritage Advisory Committee



**DEPUTY MAYOR,
CR KIM COGHLAN**

ADDITIONAL RESPONSIBILITY

Deputy Mayor

PORTFOLIO

Parks & Gardens, Splashez, Library & Cemetery

**COUNCIL REPRESENTATIVE –
COUNCIL COMMITTEES/BOARDS**

- Lake Moondarra Advisory Committee

**COUNCIL REPRESENTATIVE –
EXTERNAL ORGANISATIONS**

- North West Queensland Regional Organisation of Councils
- Lead Alliance Committee (Proxy)



**COUNCILLOR
DAN BALLARD**

PORTFOLIO

Finance and Customer Service

**COUNCIL REPRESENTATIVE –
COUNCIL COMMITTEES/BOARDS**

- Audit & Risk Committee
- Mine Workers Memorial Advisory Committee
- Strategic Fleet Advisory Committee

**COUNCIL REPRESENTATIVE –
EXTERNAL ORGANISATIONS**

- North West Water



**COUNCILLOR
JAMES COGHLAN**

PORTFOLIO

Environment, Local Laws, Development & Town Planning, Waste Management

**COUNCIL REPRESENTATIVE –
COUNCIL COMMITTEES/BOARDS**

- Audit & Risk Committee
- Mine Workers Memorial Advisory Committee



**COUNCILLOR
TRAVIS CROWTHER**

PORTFOLIO

Economic Development,
Tourism & Events

**COUNCIL REPRESENTATIVE –
COUNCIL COMMITTEES/BOARDS**

- North West Motorsport
Advisory Committee
- Regional Arts Development
Fund Committee

**COUNCIL REPRESENTATIVE –
EXTERNAL ORGANISATIONS**

- MICCOE Board



**COUNCILLOR
JOHN DOYLE**

PORTFOLIO

Sports & Recreation, Youth

**COUNCIL REPRESENTATIVE –
COUNCIL COMMITTEES/BOARDS**

- North West Motorsport
Advisory Committee

**COUNCIL REPRESENTATIVE –
EXTERNAL ORGANISATIONS**

- North Queensland
Sports Foundation



**COUNCILLOR
JOHN TULLY**

PORTFOLIO

Works & Engineering,
Water & Sewerage

**COUNCIL REPRESENTATIVE –
COUNCIL COMMITTEES/BOARDS**

- Local Disaster Management
Group (Deputy Chair)
- Lake Moondarra
Advisory Committee
- Strategic Fleet Advisory
Committee

**COUNCIL REPRESENTATIVE –
EXTERNAL ORGANISATIONS**

- North Queensland
Sports Foundation
- MICCOE Board
- Mount Isa Water Board
- Mount Isa Rodeo Committee



Mayor's Message



The next five years are critical to ensuring success of Mount Isa and the region. Council is focused on responsibly managing the regions current needs while planning for a sustainable and resilient future.

Council is committed to transition Mount Isa and the region into a sustainable remote community that is safe for all, allows for economic diversification, and establishes essential infrastructure for community to thrive. Council is dedicated to manage the unique and diverse natural environment and being inclusive in ethical governance through proactive engagement with all stakeholders.

Council is prepared to deliver on the strategies outlined in this plan to ensure the sustainability and resiliency of Mount Isa and Camooweal.

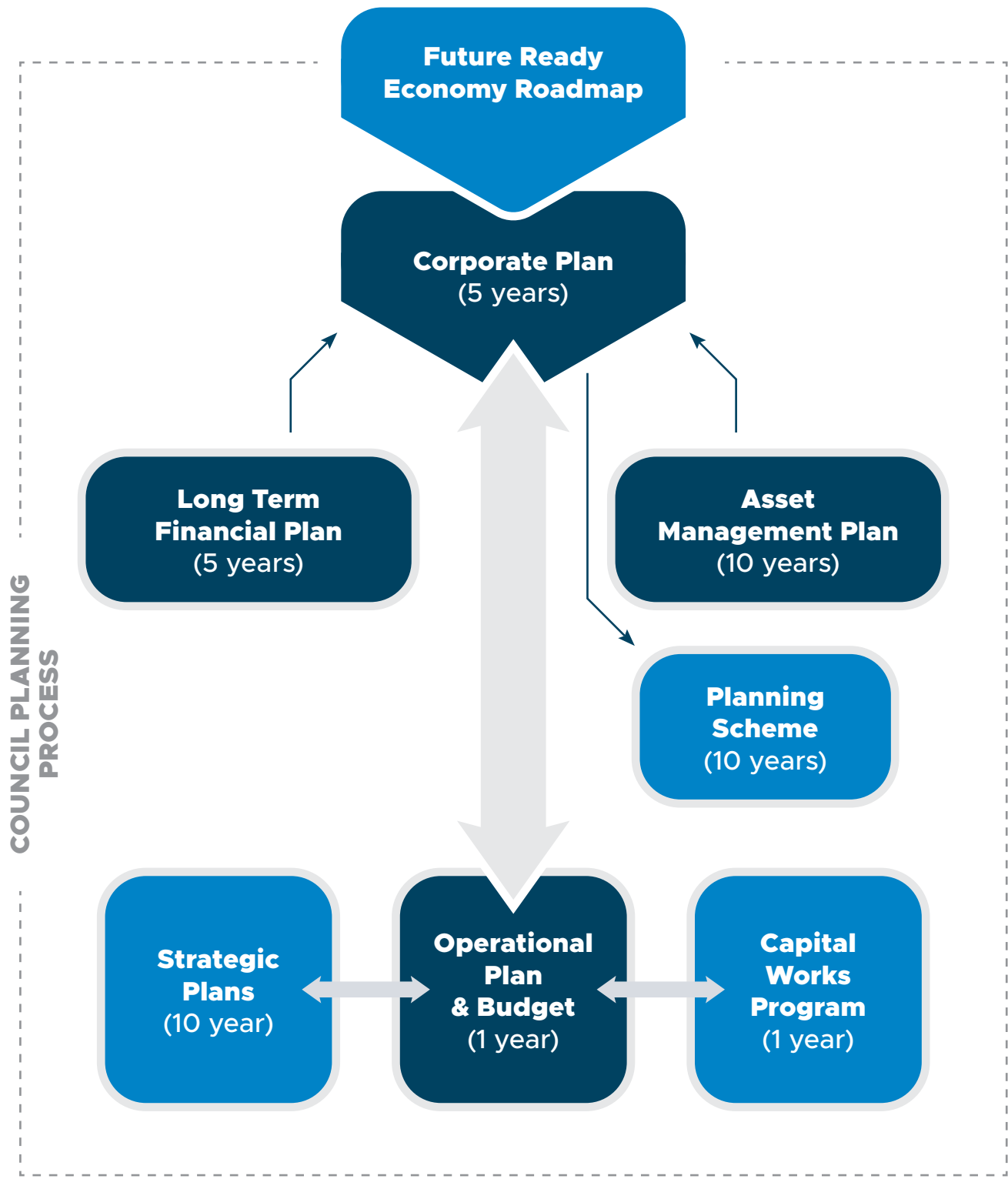
Peta MacRae
Mayor | Mount Isa City Council

The 2025-2030 Corporate Plan outlines a five-year plan of Council's integration of the Mount Isa Future Ready Economy Roadmap into all Council works. It sets out Council's priorities, guiding decision-making and policy development through five themes as identified in this plan.

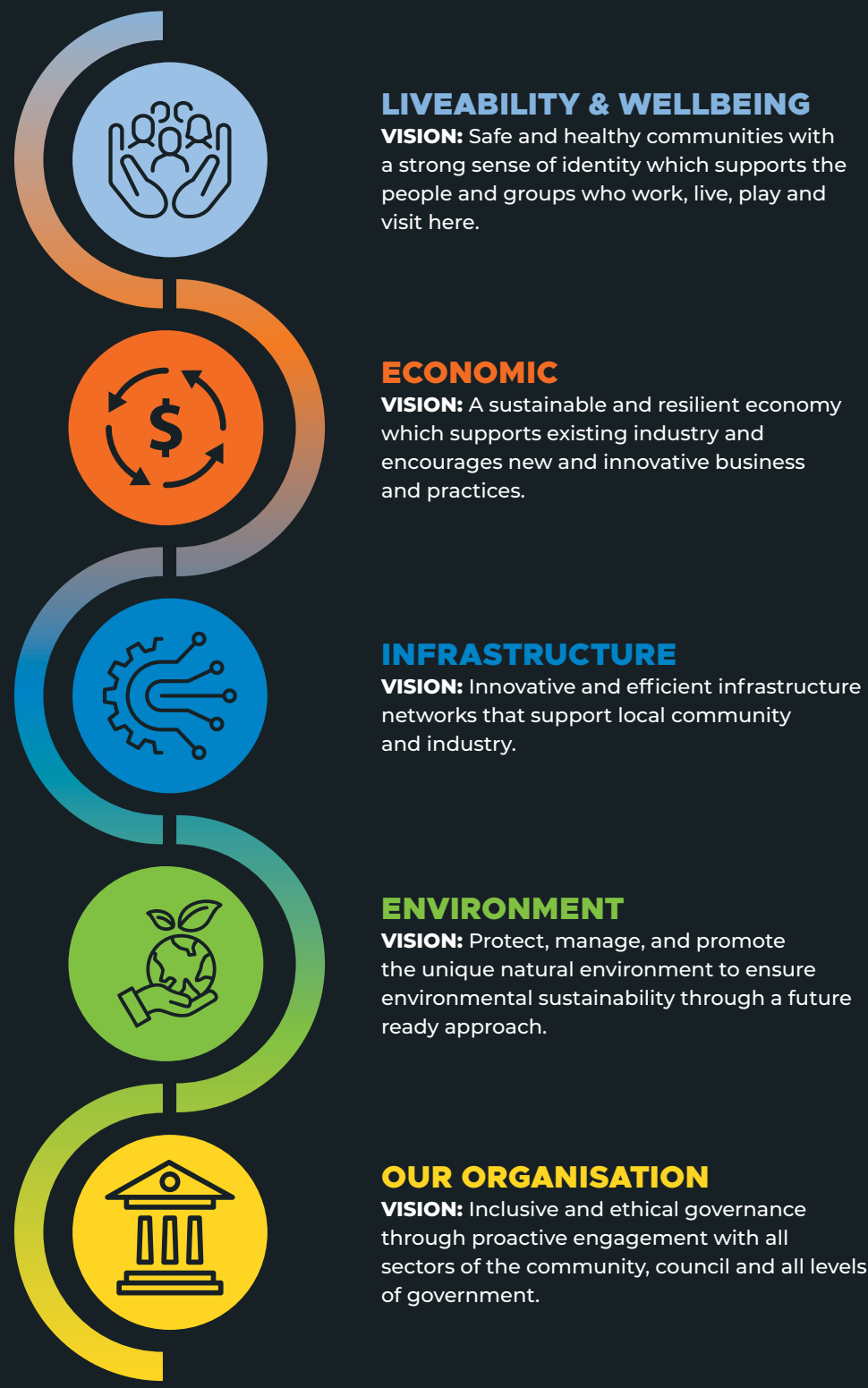
Each theme, comprised of strategies, links the Corporate Plan and the Mount Isa Future Ready Economy Roadmap to ensure the future success of the Mount Isa community.

Corporate Plan Hierarchy

This diagram shows the Corporate Plan context and how it integrates with and informs other planning documents.



Our Themes





Liveability & Wellbeing

VISION: Safe and healthy communities with a strong sense of identity which supports the people and groups who work, live, play and visit here.

STRATEGIES

- 1.1 Strengthen healthcare and social services
- 1.2 The community maintains a healthy lifestyle
- 1.3 Organisational capacity to deliver quality services
- 1.4 The community has access to a range of cultural events and activities
- 1.5 Support impact measurement and reporting to enhance health and care service outcomes
- 1.6 Set young people in Mount Isa up for success through engagement and responsiveness
- 1.7 Actively engage with and respond to Aboriginal and Torres Strait Islander peoples in the community
- 1.8 Provide the community with a range of educational opportunities which meets their needs
- 1.9 Aged and disabled community members have access to relevant services
- 1.10 Improve neighbourhood safety
- 1.11 Childcare services meet the community's needs
- 1.12 Town entrances and streetscapes are appealing, appropriate to the climate and low maintenance
- 1.13 Develop quality places where people want to live and work
- 1.14 Positive social outcomes are being delivered through streamlined cross border legislation
- 1.15 Residents have access to affordable airfares
- 1.16 Commit to a distinctive and attractive campaign to drive awareness about Mount Isa's unique attractions

Economic

VISION: A sustainable and resilient economy which supports existing industry and encourages new and innovative business and practices.

STRATEGIES

- 2.1 Strong and resilient small business sector
- 2.2 The community is well serviced by transport links to the region including public transport, rail, freight links and transport gateways
- 2.3 Planning scheme and associated activities are well supported and promote community growth
- 2.4 Community members are supported to buy a home within the region
- 2.5 Support, position and prepare businesses through the economic transition
- 2.6 Enhance the investment landscape of Mount Isa
- 2.7 Mount Isa is an internal training hub for firefighting agencies
- 2.8 Special economic zone with tax incentives
- 2.9 Council supports the acceleration of mining activities including the lifting of the ban on uranium mining
- 2.10 Enhance rail access to encourage a reduction in road transport
- 2.11 Rural residential land is available to residents
- 2.12 Improve the Mount Isa retail experience
- 2.13 Adopt and leverage circularity principles to inform new economic opportunities
- 2.14 Affordable and clean energy is expanded and incentivised
- 2.15 Support tourism operators to expand their offerings in alignment with the Future Ready Economy Framework





Infrastructure

VISION: Innovative and efficient infrastructure networks that support local community and industry.

STRATEGIES

- 3.1 Responsibly manage Council assets and its long-term sustainability
- 3.2 The community is well served by quality infrastructure
- 3.3 Council has control of regional water infrastructure
- 3.4 Plan for road infrastructure to meet future needs including a heavy vehicle bypass

Environment

VISION: Protect, manage, and promote the unique natural environment to ensure environmental sustainability through a future ready approach.

STRATEGIES

- 4.1 Support implementation of integrated water resource management in the Mount Isa region
- 4.2 Environmentally friendly fleet operations opportunities are maximised
- 4.3 Promote and incentivise best practice in waste reduction and management
- 4.4 Incentivise large scale renewable energy development
- 4.5 Adopt land and grazing management practices that prioritise the health of soil, vegetation and ecosystems
- 4.6 Our agricultural land is protected for sustainable primary industry use





Our Organisation

VISION: Inclusive and ethical governance through proactive engagement with all sectors of the community, council and all levels of government.

STRATEGIES

- 5.1 Leaders are capable, supported and meet expectations of the organisation
- 5.2 Council is an employer of choice
- 5.3 Organisational risk is well managed
- 5.4 Effective community engagement
- 5.5 A sustainable and resilient organisation
- 5.6 Council advocates effectively on behalf of the community
- 5.7 Ensuring quality customer service with community and stakeholders through all means of communication
- 5.8 Strengthen communication and collaboration between all levels of government and key community and industry stakeholders
- 5.9 Prepare the region for natural disaster impacts
- 5.10 Local spending by Council is maximised

Mount Isa City Council has multiple roles in delivering the corporate plan. These are:

ADVOCATE

Promoting the interests of the community to other decision makers and influencers.

COLLABORATE

Assisting others to be involved in activities by bringing groups and interested parties together.

DELIVER

Council is directly responsible for delivery of services.

REGULATE

Regulating activities through local law, policy or via legislation.



23 West Street, Mount Isa QLD 4825
P: 07 4747 3200 | E: city@mountisa.qld.gov.au
Office Hours 9:00 am - 4:30 pm Monday to Friday
mountisa.qld.gov.au